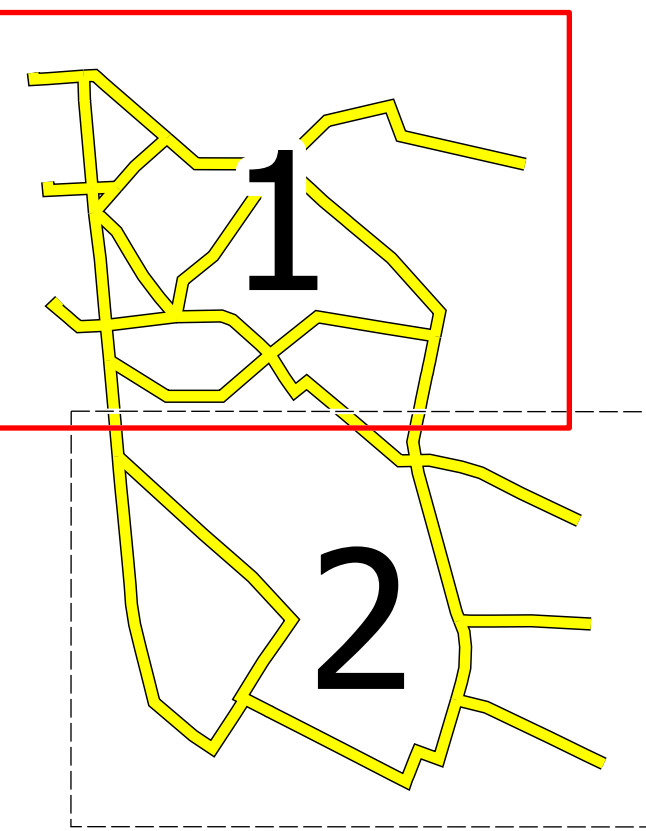
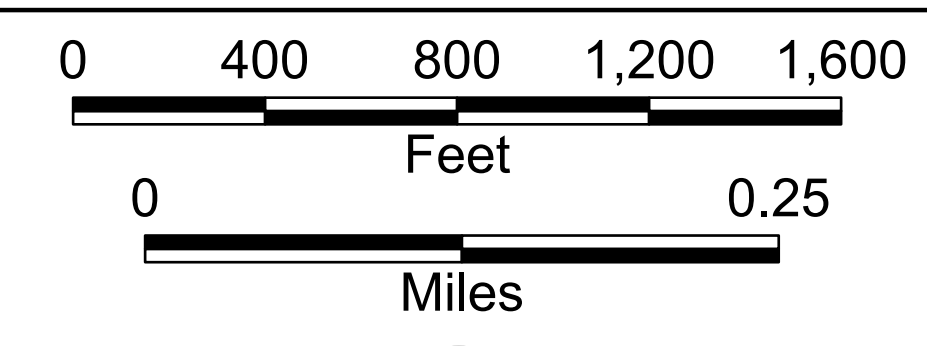

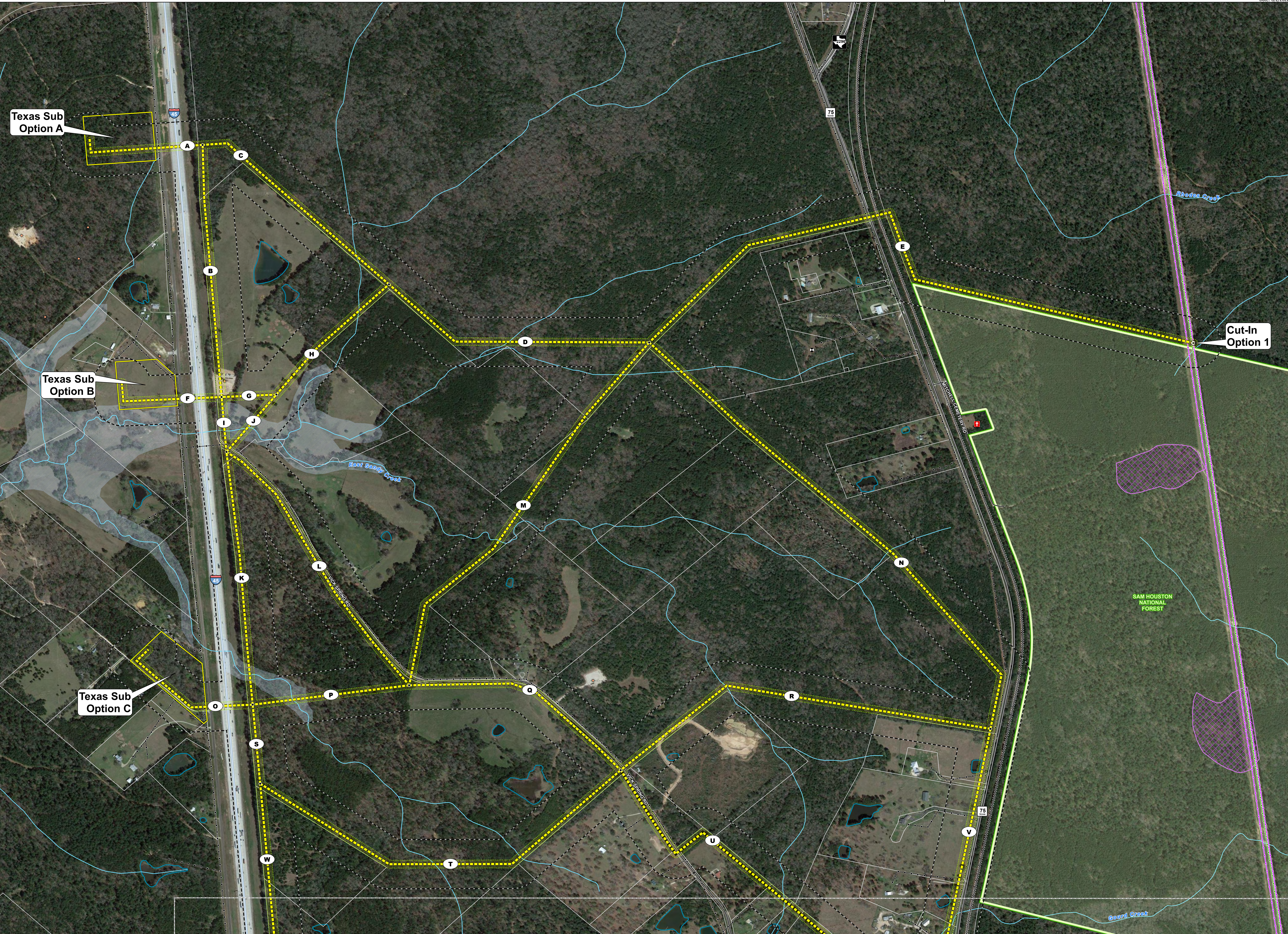
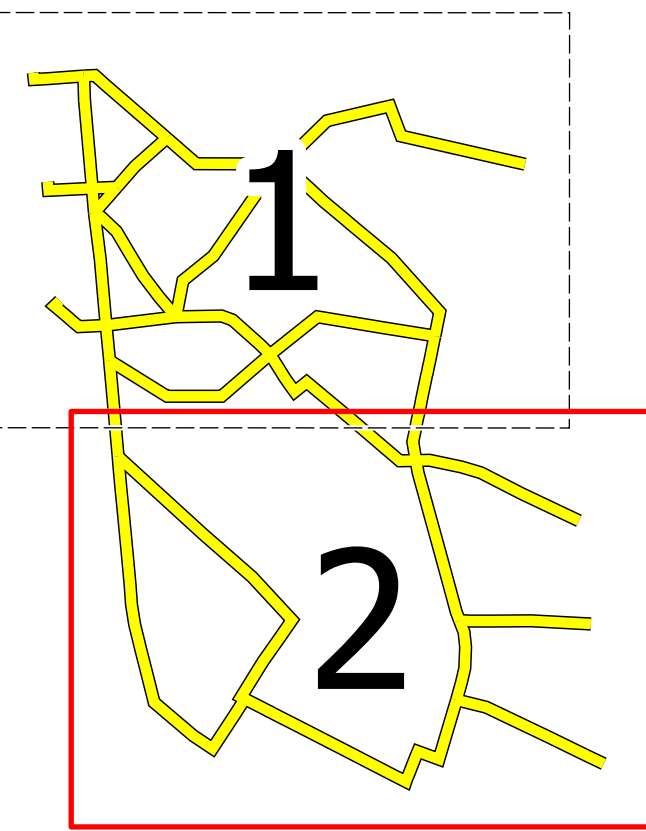
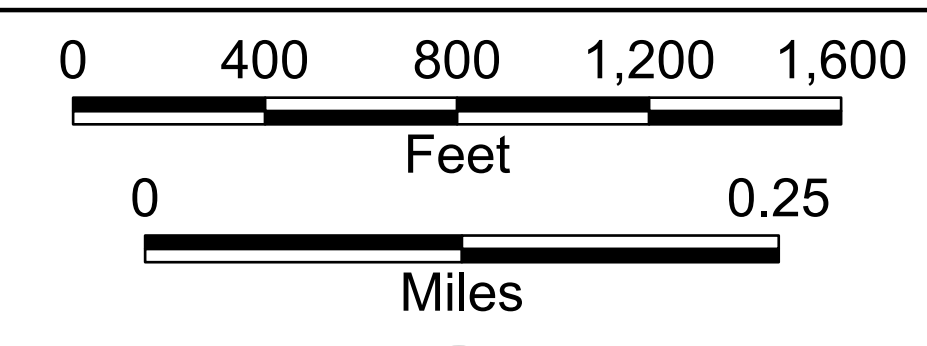



<p>Project Features</p> <ul style="list-style-type: none"> ⊙ Alternative Cut-In Location 📍 Preliminary Alternative Segment, Node, and Label 📐 Proposed Alternative Substation Site Boundary 📏 Proposed 100ft Right-of-Way 📏 310 foot Notification Zone 📏 Display Board Matchline 	<p>Existing Utility Features</p> <ul style="list-style-type: none"> 📡 Existing Entergy 138 kV Transmission Line 📡 Existing Entergy 230 kV Transmission Line 📡 Existing Entergy Distribution Power Line <p>Land Use Features</p> <ul style="list-style-type: none"> ⛽ Oil / Gas Well 📡 Communication Tower 	<p>Transportation Features</p> <ul style="list-style-type: none"> 🛣️ Interstate Highway 🛣️ State Highway 🛣️ FM Road 🛣️ County / Local Road 🚂 Railroad <p>Cultural Features</p> <ul style="list-style-type: none"> 🗿 Cemetery 	<p>Hydrologic Features</p> <ul style="list-style-type: none"> 🌊 NHD River / Stream 🌊 NHD Waterbody 🌊 FEMA 100-Year Floodplain <p>Sam Houston National Forest</p> <ul style="list-style-type: none"> 🌳 Sam Houston National Forest Property Boundary 🌳 Red-cockaded Woodpecker Habitat Management Area <p>Administrative Boundaries</p> <ul style="list-style-type: none"> 📏 Parcel Boundary 	<p>All routes and route segments included in this notice are available for selection and approval by the Public Utility Commission of Texas.</p> <p>If approved, only one route will ultimately be selected by the Public Utility Commission of Texas.</p> <p><small>Aerial Photography: Provided by Google Date: June 2022 Accuracy for Google Imagery is approximately ±20 feet. Some data layers including tract boundaries, roads, and oil/gas pipelines obtained from third-party sources may be inaccurate to varying degrees. These data have not been corrected in all locations and should be used as a general guide to feature locations only. Digitization of proposed transmission line segments was performed based on aerial interpretation of these features. Some legend symbols are enlarged for easier identification. Sensitive cultural resource data are not shown on this map as these data are not to be reproduced, distributed, or released to the public.</small></p>		<h1>1</h1>	<p>TEXAS SUBSTATION 138 KV TRANSMISSION LINE PROJECT</p> <p>PRELIMINARY ALTERNATIVE SEGMENTS</p> <p><i>Preliminary and Subject to Change</i></p>  <p>entergy</p>  <p>POWER ENGINEERS Date: 8/2/2022</p>
---	--	--	--	--	--	------------	--



<p>Project Features</p> <ul style="list-style-type: none"> Alternative Cut-In Location Preliminary Alternative Segment, Node, and Label Proposed 100ft Right-of-Way 310 foot Notification Zone Display Board Matchline 	<p>Existing Utility Features</p> <ul style="list-style-type: none"> Existing Entergy Substation Existing Entergy 138 kV Transmission Line Existing Entergy 230 kV Transmission Line Existing Entergy Distribution Power Line <p>Land Use Features</p> <ul style="list-style-type: none"> Water Well 	<p>Transportation Features</p> <ul style="list-style-type: none"> Private Airstrip and Runway Interstate Highway State Highway FM Road County / Local Road Railroad <p>Cultural Features</p> <ul style="list-style-type: none"> Cemetery 	<p>Hydrologic Features</p> <ul style="list-style-type: none"> NHD River / Stream NHD Waterbody FEMA 100-Year Floodplain <p>Sam Houston National Forest</p> <ul style="list-style-type: none"> Sam Houston National Forest Property Boundary <p>Administrative Boundaries</p> <ul style="list-style-type: none"> City Limit Unincorporated Community Parcel Boundary 	<p>All routes and route segments included in this notice are available for selection and approval by the Public Utility Commission of Texas.</p> <p>If approved, only one route will ultimately be selected by the Public Utility Commission of Texas.</p> <p><small>Aerial Photography: Provided by Google Date: June 2022 Accuracy for Google imagery is approximately ±20 feet.</small></p> <p><small>Some data layers including tract boundaries, roads, and oil/gas pipelines obtained from third-party sources may be inaccurate to varying degrees. These data have not been considered in all locations and should be used as a general guide to feature locations only. Digitization of proposed transmission line segments was performed based on aerial interpretation of these features.</small></p> <p><small>Some legend symbols are enlarged for easier identification.</small></p> <p><small>Sensitive cultural resource data are not shown on this map as these data are not to be reproduced, distributed, or released to the public.</small></p>		<h1>2</h1>	<p>TEXAS SUBSTATION 138 KV TRANSMISSION LINE PROJECT</p> <p>PRELIMINARY ALTERNATIVE SEGMENTS</p> <p><i>Preliminary and Subject to Change</i></p>  
--	--	---	---	---	--	------------	---

